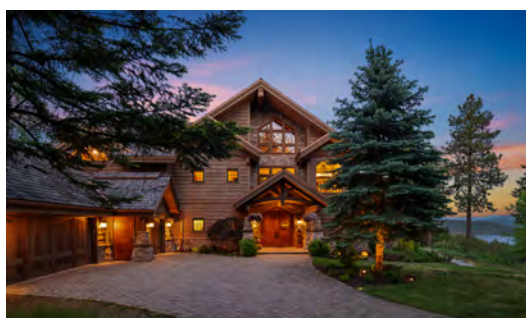


17496 S. ESTRELLA DR.

COEUR D'ALENE, IDAHO

5 BED | 4.5 BATH | 5142 SQ FT | 3 CAR GARAGE | 0.84 ACRES



FULLY FURNISHED | MOVE-IN READY | GORGEOUS LAKE VIEWS



EXCEPTIONAL LAKEVIEW ESTATE IN POLO CIELO AT PRESTIGIOUS BLACK ROCK

This custom craftsman home is superbly sited on a generous 0.84 acre parcel with private gated entry, supreme privacy and picturesque lake & mountain views. Boasting 5,142 sq ft of multi-level living space, the floorplan features 5 bedrooms, 4.5 baths, multiple living areas with a central bar for entertaining, wine cellar, formal dining and a spacious chef's kitchen. Lakeview office with built-ins and a junior bedroom suite complete the main level. Four bedrooms upstairs, including the primary master suite retreat. Expansive back deck with outdoor kitchen, gas fireplace, covered dining/living area and custom firepit with built-in seating is ideal for entertaining or simply relaxing & savoring the views. Spacious 3-Car garage with golf cart parking and ample storage. FULLY-FURNISHED and move-in ready!

- Grand entrance showcasing the gorgeous lake views
- An ideal entertaining space with a sunken bar, wine cave, living area, a spacious dining room, and an additional living room with a floor-to-ceiling stone fireplace and french doors
- A well-equipped chef's kitchen with a massive butcher block island, granite countertops, Wolf double oven with 6 burner range + griddle, tons of counter space and walk-in pantry
- Master suite with gorgeous lake views, stone fireplace, built-in armoire, large walk-in closet and a luxurious ensuite with hammered copper tub, walk-in shower and dual sink vanity
- Additional 2 junior suites with stone fireplaces perfect for guests plus another 2 bedrooms with shared bath
- Dreamy covered outdoor living area with gas fireplace, built-in BBQ kitchen with two bar fridges and storage, ceiling heaters, two dining areas and circular firepit seating showcasing the gorgeous lake views
- Complete with a new generator, water softener, two hot water heaters and heat pump

TOUR FACTORY PHOTO SLIDESHOW:

<https://www.tourfactory.com/3082619>

3D MATTERPORT TOUR:

<https://my.matterport.com/show/?m=fmHJcoucMUR>

VIDEO TOUR:

<https://vimeo.com/832293438/961a50e384?share=copy>



GREG ROWLEY
LUXURY PROPERTY SPECIALIST

208.659.6527
growley@cbidaho.com

www.LuxuryHomesNorthIdaho.com



COLDWELL BANKER
SCHNEIDMILLER
REALTY

