

THE TOWNHOUSE

15522 S. CHALK HILL DR.

2 BED | 2.5 BATH | 1628 SQ FT | 1 CAR GARAGE + CART GARAGE



MATT BAINE
DIRECTOR OF REAL ESTATE SALES

208.819.2928
mattb@cdanational.com

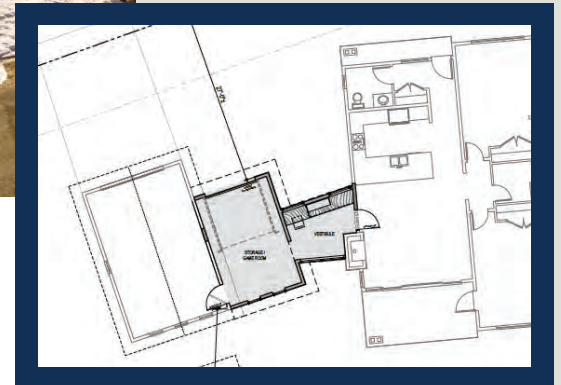


COLDWELL BANKER
SCHNEIDMILLER
REALTY





284 Sq Ft Storage and Vestibule is Underway



- Open concept living with spectacular golf course & mountain views
- Spacious chef's kitchen with knotty alder cabinetry & GE Café stainless steel appliances, large peninsula and tons of storage
- Massive sliding door opens up to the covered patio & gorgeous views
- The bedrooms include a luxury ensuite with double vanity and tiled walk-in showers
- Exterior finishes include bronze windows, wood siding, cultured stone & rustic metal accents
- Enjoy maintenance-free living with a convenient location to the clubhouse and all of it's amenities

3D Matterport Tour: <https://my.matterport.com/show/?m=89HXAtYwQjF>

Photo Slideshow: <https://www.tourfactory.com/2955825>

CDA National membership is not included with purchase but may be available per a separate agreement

